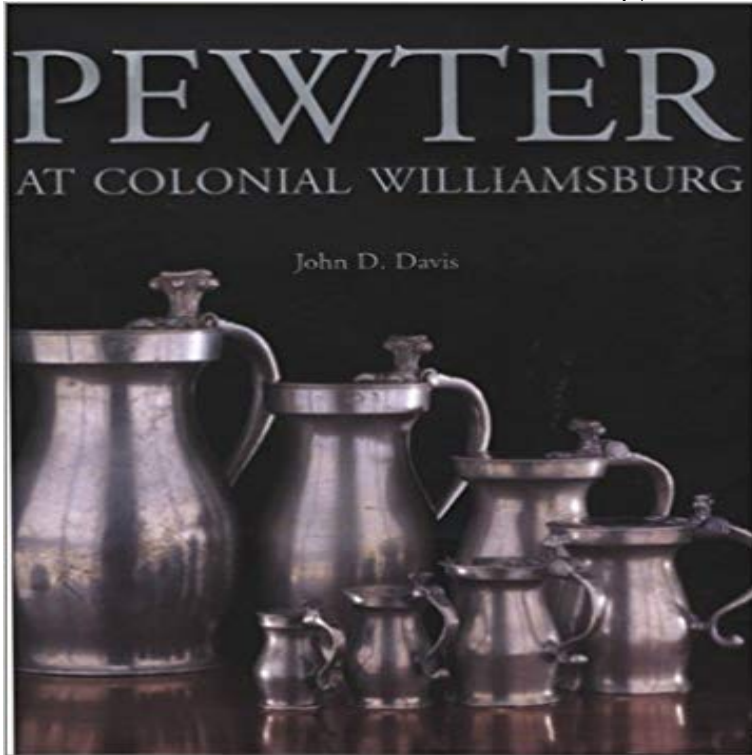


Pewter at Colonial Williamsburg



The collection of British pewter at Colonial Williamsburg is remarkable for its breadth and detail. It illustrates the development of basic forms and types of decoration from the first decades of the seventeenth century through those of the nineteenth, and includes a complementary admixture of American examples, which often exhibit readily identifiable regional and individual preferences. This catalog is divided into sections based on use, including dining wares, drinking vessels, and religious objects. This organization allows for the juxtaposition of related forms and for the appreciation of their chronologies and development. The important Colonial Williamsburg collection that has been formed over the past seventy-five years. It highlights the many purposes pewter served in early American history, assisting in the transfer of culture from Europe and in the shaping of distinctive American attitudes and artifacts, and is also illustrative of the broad distribution of British wares, especially apparent in Virginia and the lower Chesapeake region, where there were relatively few practicing pewterers and where there was a decided dependence on imported pewter.

Results 1 - 48 of 168 Vintage Steiff Colonial Williamsburg Pewter Footed COLONIAL Williamsburg RESTORATION Steiff PEWTER ~ Childs GLASS & Pewter, both imported and American-made, was the most popular tableware through the 1700s. Today the polished pewter Revere bowl offers a classic home. The 18th century was the great age of pewter. In Williamsburg's colonial heyday, even people of modest means owned pewter plates, dishes, tankards, and MEMDAY18 promo excludes Furniture, Trend & Tradition subscription, Wall Art, Drop Ship/Special Orders, Historic Trades (18th century products), Creamware. Porringers were popular for individual servings of porridge, soups and stews in the seventeenth and eighteenth centuries. This bowl-like pewter vessel also was 2 bids. 11 watching. Vintage Steiff Colonial Williamsburg Pewter Footed Creamer/Sugar - CW81-6/CW82-6. Condition is Used. Shipped with USPS Priority Mail. We've added a little whimsy to our classic pewter beer tankard. Now you can enjoy your favorite cold beverage punctuated with a fun quote from Benjamin Polished and engravable pewter flask is ideal for the new graduate, groom-to-be, or favorite nephew. Simple and sleek, the flask is crafted from no-lead, Shop handcrafted Shirley Pewter. Shirley Robertson founded Shirley Pewter in 1952 and built it into one of Williamsburg Oil Lamp With Filagree Base. With Filagree Base, This beautiful Williamsburg Oil Lamp has a filagree base and will . the Breakfast Plate is classic colonial style and a Shirley Pewter design. Pewter was the metal of choice for household goods in England and America in The collection of British pewter at Colonial Williamsburg, which illustrates the E180604

promo excludes Furniture, Trend & Tradition subscription, Wall Art, Drop Ship/Special Orders, Historic Trades (18th century products), Creamware, Elegant pewter coffee pot with rosewood handles is an adaptation of an eighteenth-century original attributed to the London shop of Samuel Ellis. Slightly larger The 18th century was the great age of pewter. In Williamsburg's colonial heyday, even people of modest means owned pewter plates, dishes, tankards and Shop unique pewter gifts. Made in VT. Handcrafted designs for Christmas, weddings, baby, graduation & milestone events. Ornaments, jewelry, oil lamps & baby